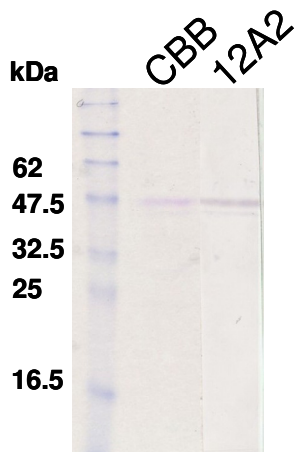




YAMASA CORPORATION
DIAGNOSTICS DEPARTMENT
Tokyo Office
1-23-8, Nihonbashi-kakigaracho
Chuo-ku, Tokyo, 103-0014, Japan
Tel. +81-3-3668-8558 Fax. +81-3-3668-8407
www.yamasa.com/shindan/index.htm

Monoclonal Antibody to Rat Surfactant Protein D

Code No. : 80072
Product name: MAB TO RAT SURFACTANT PROTEIN D (12A2)
Quantity: 200 μ L (200 μ g)
Clone: 12A2
Quality: Mouse IgG1 (Purified by protein A chromatography)
Solution: 1 mg/mL IgG, 0.1% NaN_3 , PBS, pH 7.4 (200 μ L)
Character: This antibody reacts with mouse SP-D.
It is possible to use for western blotting and ELISA.
Storage: The solution should be stored below -20°C .
Repeated freezing and thawing should be avoided.
Note: Research use only.



Sample: partial purified rat SP-D
Antibody concentration: 10 μ g/mL
Secondary antibody: HRP-anti mouse IgG

Reference: Murata, M. et al., *Exp Lung Res.* 36, 463-468 (2010)