

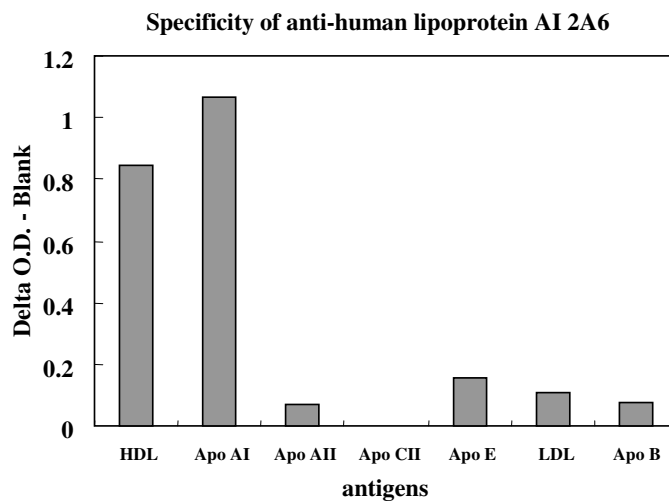


YAMASA CORPORATION

DIAGNOSTICS DEPARTMENT
Tokyo Office
1-23-8, Nihonbashi-kakigaracho
Chuo-ku, Tokyo, 103-0014, Japan
Tel. +81-3-3668-8558 Fax. +81-3-3668-8407
www.yamasa.com/shindan/index.htm

Monoclonal Antibody to Apolipoprotein AI

Code: 7697
Quantity: 200 μ L (200 μ g)
Clone: 2A6
Immunogen: Apolipoprotein AI
Quality: Balb/c IgG1 κ (Purified by protein A chromatography.)
Solution: 1.0 mg/mL IgG, PBS, 0.1% NaN₃, pH7.4
Character: This antibody reacts to human Apolipoprotein AI.



Storage: The solution should be stored below -20°C .
Repeated freezing and thawing should be avoided.

Note: Research use only.